



**Leabharlann Sláinte na hÉireann**  
**Health Library Ireland**

Ár nAcmhainn Náisiúnta | Our National Resource

# HEALTH LIBRARY IRELAND NEWS

ISSUE 29 • MARCH 2023

## A STRATEGY ENDS, ANOTHER BEGINS

This year, 2023, is the final year of implementation of our current library strategy. As part of its implementation we have a number of user-focused educational events. The first of these was a webinar on 14th March for all nurses and midwives – back by popular demand, and now an annual event. A recording of the event and presentations are available at <https://hli.ie/nandnm>.

While the strategy has achieved a lot – including implementation of functional national teams (Digital, Evidence, Info Skills, Knowledge Support, Estates) and associated standardised services, there is still plenty to be implemented this year and the overall vision that "everyone will have access" can only be implemented within 2023 if the recommended by the Chad Report funding is forthcoming.

Awareness and education are key to this vision. That is why four user-focused events are planned to highlight what all users have access to and how they can "navigate the evidence".

An additional focus is on sustainability and greening our libraries, adopting practices that align with climate action. Finally refurbishments of libraries, both planned – University Hospital Kerry, Midland Regional Hospital Mullingar, Galway – and unplanned (University Hospital Wexford) are high priority.

I'd like to thank Stacey Dardis (Library Assistant at University Hospital Wexford) for all her work in the library there, and her bravery after the recent fire. The library was unfortunately destroyed by the fire, and Brendan Leen (Area Library Manager for the south) is working closely with management to plan for a rebuild.

We have a new national phone number 0818 100 900, making it easier for staff to contact us. Our library staff engagement is planned for May in Tullamore, and I am really looking forward to meeting all the library staff in person for the first time in almost 5 years. This event will help us to plan the next long term strategy as well as catch up on the face-to-face time we missed during the pandemic.



Aoife Lawton with HSE CEO  
Bernard Gloster

**Aoife Lawton**  
**National Health Librarian**

## CONTENTS IN THIS ISSUE

Open Day in Dr Steevens' p.2

Health Libraries and RDM p. 3

Innovation Update-5

HSE Sligo Goes Green p. 6

National GP Trainers Conference p. 7

LibCal: Behind the Scenes p 8-9

Single Sign-On for Library  
Access p. 13

Library Statistics p. 14

# Open Day in Dr Steevens' Library, Dublin

Thursday 23rd March saw staff in Dr Steevens' Library open their doors for an informal open day to show off some of the unique services offered in the library.

Tea and coffee as well as some homemade goodies were on offer to those who dropped in. It was a lovely morning with staff welcoming some new and some old faces into our recently refurbished space.

Innovation Lead Jennifer Butler distributed information postcards highlighting some of the services available to staff and whisked them into the library where Aoife, Gethin, Elaine and Anne were on hand to answer any queries and to give a quick demo of our massage chair to anyone needing to relax for a while.



The famous Dr Steevens' Library massage chair



New patrons who signed up to receive updates/news via our mailing list were entered into a competition to win a €50 one-for-all voucher kindly sponsored by The Book Nest. Jennifer Monaghan from National HR was our lucky winner.



(L-R) Dr Maureen Flynn, Aoife Lawton and Liz Roche

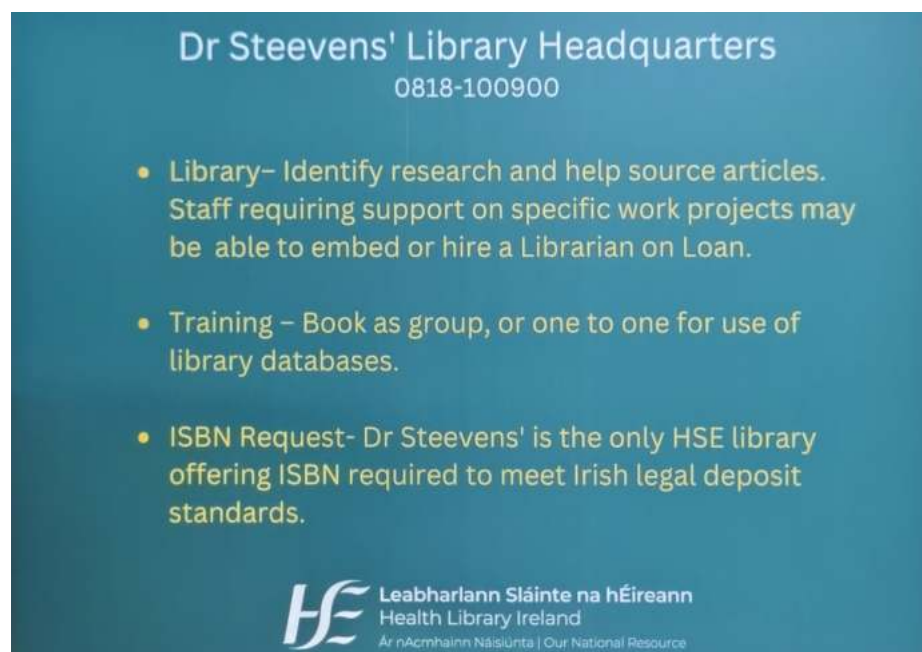
Our new CEO Bernard Gloster even dropped in for a quick chat which gave our National Librarian Aoife a chance to show off our wonderful library service.



Aoife Lawton discusses the library with HSE CEO Bernard Gloster



Prize winner Jennifer Monaghan, National HR



**You can now contact Health Library Ireland on our new national phone number 0818 100 900**



# Health Libraries and Research Data Management

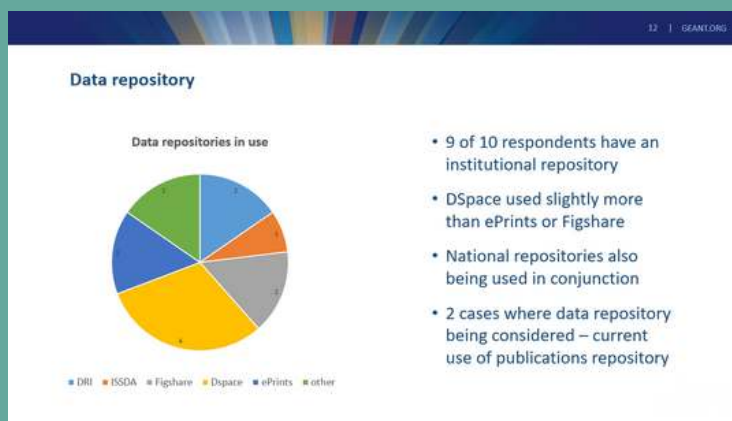


**Padraig Manning, Lenus manager**

The EOSC -RESIN workshop, which I attended on behalf of Health Library Ireland, was extremely informative. Essentially a collaboration between GÉANT (an EU-funded alliance of National Research Education Networks) and HEAnet, the workshop discussed Research Data Management from a number of perspectives. Sarah Jones of GÉANT provided the overview, talking about efforts to link up the Research Data Management (RDM) activities of different research-performing organisations in Ireland.

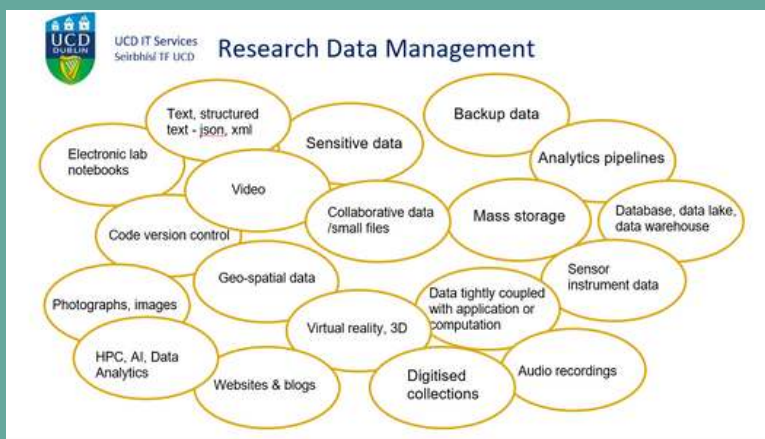
These activities are presently quite siloed, but there is a lot of desire to organise and link up at national level. There is also considerable desire for an IReL style consortium approach to maximise bargaining power and avoid vendor lock-in. HEAnet and GÉANT both provide support around this, in the context of EOSC Future.

There were a number of speakers at the workshop, who spoke about different aspects of providing RDM services. Andrew Simpson of RCSI spoke about their move from the Bepress system to Figshare – driven by their acquisition of a new CRIS system (Symplectic Elements) and the desire to ensure close integration between this and their research repository. Interestingly he seemed to feel that the Figshare somewhat over-promised on what they could deliver, although they have improved over the course of the partnership.



Fred Clarke of UCD talked about RDM from a data storage angle – the vast quantities of data, and the technical / economic problems generated as a result.

He was very insightful on the multifarious types of data involved, and very keen for the metadata enrichment that the library services could provide to make the data discoverable and usable (data without metadata being essentially useless).



Roberto Sabatino spoke about IRLDAT, a sort of local version of the EUDAT programme, which perhaps surprisingly Ireland isn't yet part of. They want to build a platform (to be hosted on a distributed basis) to aid research data storage, and are currently running a pilot project.

Garvan McFeely of HEAnet gave a brief presentation about HEAnet's brokerage service, which provides logistical help and organisational know-how for people preparing tender documents (relevant in the context of trying to leverage RDM services).

After that there was a useful discussion, and some networking over coffee and sandwiches. Lots of interesting insights into things like DMP tools – DMPonline is the preferred solution – and CRIS systems. Indeed close integration between CRISs and repositories was taken for granted, and the 3-4 systems in operation in Ireland all seem to do their job well even off the peg.

The key takeaways from the workshop were that close integration between CRIS and repository is a no-brainer; planning ahead for data storage is essential, and nobody seems to have a Big Data solution yet, although Fred Clarke said UCD are dealing directly with Amazon (which gives an idea of the quantities involved).

# Library Refurbishment at University Hospital Waterford



The library entrance before the refurbishment...

**Shona Nolan, Librarian  
University Hospital Waterford**

Last autumn, the library at UHW received funding for some refurbishment works.

Now that the work is complete, we have a smart (and infection control friendly) marmoleum floor and a lovely new colour on the walls.

The General Manager of the hospital kindly agreed to fund the cost of new chairs throughout the Reading Room and 24 Hour Space.



...and after

New glass panes were also fitted in the counter area of the Library for the purposes of secure lockable storage.

We hope you'll agree with us that the work has created a much more inviting, comfortable and attractive space for our readers.



The old reading room...

...refreshed!



The old counter....



...and the new.



# Design Thinking: Innovation Update

**Jennifer Butler, Innovation Lead**

MakerLabs and MakerSpaces are changing the way we undertake innovation and prototyping in Irish Hospital sites! These spaces are becoming increasingly important in hospitals where they offer medical professionals the opportunity to design and prototype new medical devices, healthcare services and technologies.

MakerLabs and Makerspaces in hospitals represent a physical space where teams can come together to devise ways to improve patient care and safety, foster innovation and collaboration and increase efficiency in healthcare. Each Makerlab was launched in the context of a Design-Thinking workshop with Trevor Vaugh, of The Big Life Fix, and is a collaboration between Health Library Ireland, the Spark Innovation Programme and National Doctors Training and Planning.

Our Lady of Lourdes Hospital, Drogheda was the first to launch a MakerLab, followed by Cork University Hospital, Midlands Regional Hospital Tullamore, Connolly Hospital Blanchardstown, and Merlin Park University Hospital Galway.

Health Library Ireland is pleased to announce a Design-Thinking presentation by Trevor Vaugh on 28th April in Galway University Hospital. Ask your local HSE Health Library Ireland librarian for more details, or by calling 0818-100 900.

You can book a Makerspace at **Tullamore**: <https://bookings.hli.ie/equipment?lid=2404>

**Drogheda**: <https://bookings.hli.ie/equipment?lid=1840>

**Blanchardstown**: <https://bookings.hli.ie/equipment?lid=2816>



Check out our selection of reading materials handpicked by the team at HSE Spark Innovation Programme.

Increase your creativity levels and foster an innovative mindset in your work today by taking a read.

They and much more are available now through HSE Health Library Ireland. Ask your nearest HLI librarian for details!



Please follow Health Library Ireland on LinkedIn and Twitter.



# HLI Sligo Goes Green!

**Anne Clare Feely, Library Assistant  
Sligo University Hospital**

For the greenest month of the year it seems like a blooming good time to talk about plants.

HLI Sligo recently got funding through Area West Health Library Ireland for a new plant initiative. Thanks to Estates and West Area Manager Tony Linnane and Helen Clark (HLI Sligo) for their support.

There were a few different reasons for taking a leaf out of NASA's handbook and getting

plants into our library, including research that shows re-oxygenating plants improve the air quality in an office environment. More recent research suggests that our blood pressure and cognition levels also improve when greenery is present.



\*Office friendly plants: Chinese evergreens (Aglaonema), Red-edged Dracaena or Dragon Tree, Weeping Fig (Ficus Benjamina), Calathea Lancifolia, Philodendron 'Grand Brasil', Strelitzia Nicolai, Kentia Palm, Bamboo Palm, Areca Palm

Criteria for selecting the plants: re-oxygenating qualities and the ability to survive a certain amount of neglect!

For the containers I looked for fairly plain dark containers that were lightweight, wide at top so as to catch leaves and with no drainage holes so that no saucers were needed.

I contacted an existing HSE supplier - our local Homeland/Aurivo Co-Op with a list of suitable plants\* to see what they could supply. In order to save on return costs they were asked to only order plants that they could sell in store in case they were not suitable for our library space.

We got four different plant types and tried to keep two or three together as plants do better in groups. The three larger plants were Calathea Lancifolia, Weeping Fig (Ficus Benjamina), Dragon Tree (Dracaena) and then some smaller Chinese Evergreens (Aglaonema).

The hardest thing to do when looking after plants is not over-watering. Most plants are much better off being under watered than over-watered. Less is more - the zen approach for humans works well for plants too!

# ICGP National GP Trainers' Conference

I'm excited to share with you some highlights from the recent ICGP National GP Trainers Conference, which I had the pleasure of presenting at on March 10th, 2023 as part of a collaboration between ICGP library and the HLI Infoskills team.

The conference was held at the beautiful Strand Hotel in Limerick, and I was accompanied by Patricia Patton, the ICGP librarian. Together, we had the opportunity to discuss the valuable library resources that are available from both the RCGP and HLI libraries.

During our presentation, we spoke about a number of resources that piqued the interest of the GP Trainers in attendance. Specifically, we highlighted the benefits of using BMJ Best Practice and the online access that GP Trainers have to BNF and BNFc. The audience was thrilled to learn about these resources and how they can be used to enhance their practice.

One resource that really stood out was Martindale, which is a comprehensive and reliable reference for drugs and medicines used throughout the world. The GP Trainers were impressed with its usefulness, particularly when it comes to patients who are on non-Irish medications.

All in all, it was a fantastic experience and I'm grateful to have had the opportunity to share these valuable resources with such an engaged and enthusiastic audience.

**Isabelle Delaunois, Library Manager  
University Hospital Limerick**



Patricia Patton (ICGP) and Isabelle Delaunois (HLI)

## Renovations at St Conal's Hospital, Letterkenny



Anne Marie Gallagher, Róisín Hunter  
McGlinchey and Aoife Lawton

***"Thank you very much for this amazing service of library for doctors, nurses and as well as students. It's a well kept and quiet area to study and work on projects and exam preparation."***

***There is plenty of space and the seating arrangement is great to allow for good and reasonable distance from others keeping in view of the COVID-19 pandemic."***

***- Dr Naveed Bangash, St Conal's Hospital***





# LibCal - Innovation Behind the Scenes

## SAVE TIME WITH LIBCAL

### Hours



- Enter opening hours x 1, and use everywhere
- Correct hours on Library Newsletter automatically
- Different areas with different opening hours show as departments



### Equipment

- Make equipment bookable
- Enter a description of the equipment and terms and conditions
- Check in / Check out
- Simple reporting with Stats in LibCal and Libinsights

### Appointments



- Set times you are available & embed elsewhere
- Get details of research consultation in advance
- Enter research consultation afterwards if not booked
- Integrate with LibStaffer
- Simple reporting with Stats in LibCal and Libinsights



### Events

- Set up an event on a calendar and use it everywhere
- Record attendance
- Categorise Events
- Get feedback
- Integrate with Social Media
- Simple reporting with Stats in LibCal and Libinsights

### Spaces



- Make spaces bookable and use widgets to embed
- Enter a description of your space, and available equipment
- Spaces can match departments on Hours
- Includes contact tracer
- Simple reporting with Stats in LibCal and Libinsights



### Stats

- Reports on
- Events
  - Appointments
  - Spaces
  - Equipment
  - Patron Activity
- and more

### LibInsight



Data sets  
General Top Level - live data  
Individual sets for

- Events
- Appointments
- Spaces
- Equipment

o Filters

Dashboard  
Summary of data sets for LibCal  
Available to all  
Can be 'public'



**Natasha Smith, Library Assistant**  
**Our Lady of Lourdes Hospital, Drogheda**

LibCal, an online calendaring platform, with three associated components: the appointment scheduler, event scheduler, and room booking service. The functionality of each LibCal component will be discussed, along with its pros and cons based on experience.

LibCal is an integrative software solution that is easy to manage and provides an intuitive user interface for patrons. LibCal has been used by Health Library Ireland to manage the scheduling needs of library patrons and students.

LibCal's "My Appointments" function eliminates the need for emailing back and forth to coordinate schedules; this was time-consuming and inefficient as an organisational method.

Integration between LibGuides and My Appointments is seamless, and both sites feature a detailed profile and contact information for the librarian who will be handling your bookings. The scheduler is a software widget that can only be accessed from a webpage where it has been embedded.

LibCal provides librarians with an account and access to the Dashboard, a nonpublic interface requiring a unique login, from which all LibCal features are administered. Regular account holders have the ability to set up their own appointment scheduler, event calendars and room booking.

The most important details in this text are the details of the Libcal page, the Appointment Scheduler Settings tab, and the Advanced Bookings setting.

The Appointment Padding feature allows the librarian to specify a gap between appointment time options, which is then applied automatically to subsequent appointments, providing time between appointments for other activities or to keep appointments from stacking up too close together.



# LibCal - Innovation Behind the Scenes (continued)

**Natasha Smith, Library Assistant**  
**Our Lady of Lourdes Hospital, Drogheda**

LibCal provides a user-friendly text editor, settings tab, widget/Embed Code tab, and subscription URLs for any calendaring product that supports the iCal format. Currently, there is no automatic mechanism to inform the librarian that an appointment has been scheduled, The stats feature of LibCal provides a monthly breakdown of the number of appointment slots available and how many were actually scheduled, with an embedded pie chart that indicates the yearly occupancy rate.

Libcal also has calendaring and room booking functions that enable librarians to create online registration forms for library events and a do-it-yourself room scheduling feature to reserve rooms in the library for patrons. These features have increased visibility to patrons and reduced the time spent scheduling appointments via e-mail.

Creating a new calendar is easy, with a link to create a new calendar, an ID number associated with each calendar, the calendar's name, its visibility (public or internal), a link to the Event Explorer for each calendar, and the public URL for each calendar. Registration forms are available to reserve a seat for a scheduled event, and the results can be downloaded into a spreadsheet for further analysis.

The event URL is available and can be sent via e-mail to interested patrons. Information about events can be exported to any electronic calendaring software that accepts the iCal format.

The screenshot shows the LibCal interface with a navigation bar at the top containing links for LibCal, Events, Appointments, Spaces, Equipment, Tickets & Passes, and a settings menu. The main content area is titled 'Spaces in Location' with a dropdown menu set to 'Cork University Hospital Healthcare Library'. Below this is a 'Utilization Dashboard as of 10:52am' showing 'Cork University Hospital Healthcare Library Bookable Spaces: 0 / 0 / 0' and 'Cork University Hospital Healthcare Library Seats: 0 / 17 / 38'. A filter section shows 'Zone' as 'Spaces not assigned to any Zone' and 'Category' as 'CUH Library area'. A 'Go' button is present. Below the filter is a 'Zone Occupancy Detail' table and a 'Booking Activity' section.

Spaces not assigned to any Zone	Bookable Space	Current Occupancy	Allowed Capacity	Maximum Capacity	Occupancy vs Allowed	Occupancy vs Maximum
CUH Library PC desks		0	10	20	0%	0%
CUH Library study desks		0	7	18	0%	0%
Total	0	17	38		0%	0%

Booking Activity: No recent activity to display.

LibCal provides library patrons with a quick and easy way to book rooms in the library, such as group study rooms, meeting rooms, lecture rooms, or classroom. Booking Mediation enables account holders to approve or deny a booking request, allot a maximum number of time slots, and search for bookings made for an individual room or for all the rooms in the system based on a booking status.

Libcal is an easy-to-use scheduler that connects patrons to the librarian in a straightforward way. Forms to schedule events can be created from scratch or copied and edited from an existing form. General Settings regulate access to the 'input' and 'delete' functions in the room bookings area.

Additionally, patrons and the librarian are sent e-mails with an ICS file to easily add their appointments to their preferred calendar. LibCal is a great product from SpringShare and interfaces well with its other products.

# BMJ Best Practice Brought Back for a Third Year



Health Library Ireland has renewed access to BMJ Best Practice for a third year. Best Practice is an authoritative, fully-referenced point-of-care tool, used by clinicians in both the acute and community settings.

Unlike many such clinical resources, BMJ Best Practice is free for use by anyone in Ireland, including:

- GPs
- Students
- Researchers
- Members of the public

## Librarians contribute to new Patient Safety Website



HLI librarians Gethin White (far left), Lorraine Mason and Dympna Lynch were among those at the launch of the National Quality and Patient Safety Directorate's new website **Patient Safety Together; learning, sharing and improving**, at the Ashling Hotel in Dublin.

Gethin, Lorraine and Dympna contributed to the content on the new site, which you can visit at <https://www2.healthservice.hse.ie/organisation/nqpsd/pst/>.



# Moving In, Moving On - Staff Developments

**Gabriel Graves recently joined Health Library Ireland. Here he describes his work both in Ireland and in his native Argentina.**

**Gabriel Graves, Librarian  
Digital Knowledge Service**

A series of hard to follow incidents ended with me studying Library Sciences in the Argentine National Library. I wanted to be a librarian. I got to be a librarian. I persevere.

I have worked in different libraries in Argentina, from small and very specific ones to the Biblioteca Nacional de Maestros (National Library of Teachers). There, we developed a network of school libraries, creating and empowering teams in every jurisdiction.

I taught how to implement library software and standards to the most diverse institutions all over the country. Fifteen years later, the pandemic happened and we had to learn how to develop remote services and education tools.

Then another series of hard to follow incidents ended with me moving to Ireland and working at the Royal College of Surgeons in Ireland as Content and Metadata Manager Librarian, where I started cataloguing their Antiquarian Collection. After that very significant experience, the Health Library Ireland gave me the opportunity to work in the Digital Knowledge Services.

My role with the Digital Knowledge Services Team implies dealing with the vast amount of digital resources that Health Library Ireland provides. How to make them available for patrons and librarians and how to produce reliable data about that usage, is our daily challenge.

Also, I troubleshoot for the everyday issues that arise. In order to achieve that, I am working with a very skilled team of professionals and a set of informatics tools. We try to make information access as broad and easy as possible. Sometimes that involves struggling with vendors, licences, platforms and, of course, with my own limitations. I am always willing to learn.

This distance between the knowledge and the person is what a team like ours seeks to bridge. We know the transformative potential of that encounter. And once that encounter occurs, infinite possibilities arise.



It's a busy time for staff moving on. We're grateful to Maura Flynn, Librarian at MRH Tullamore for all her work and leadership over the years. Maura is moving from the HSE at the end of March and we wish her well in the next role.

We say goodbye also to Jennifer Butler, Innovation Lead who has brought great ideas to our service – she too moves on next month.

Melanie Surkau, librarian in Kerry General Hospital, Tralee, is taking a career break. We wish her good fortune in her travels

There are two people who retire in April, Julia Reynolds, long serving librarian at Mayo University Hospital and Mary Thompson, senior Library Assistant at MRH Portlaoise. We wish both Julia and Mary well for a happy and healthy retirement.



# HLI at QPS TalkTime No. 3 - Expand Your Knowledge

Helen Clark and Nicola Fay on behalf of the Information Skills Team were delighted to have an opportunity to participate in the online lunchtime QPS TalkTime on 7 March last.

The HLI training calendar is included in the QPS Prospectus for Education and Learning Programmes 2023. There were 12 breakout rooms, see below, available during the event to allow participants to ask about learning opportunities and courses advertised in the QPS prospectus for 2023.

Join Dr. Mary Browne and Veronica Hanlon with special guests in breakout rooms....

<b>Complaints Governance Learning</b> Elaine Ahern	<b>Human Factors</b> Margaret Codd & Dr Sam Hughes	<b>Change &amp; Innovation</b> Elaine Birkett
<b>Data for Decision Making</b> Gemma Moore	<b>Open Disclosure</b> Angela Tysall and Mary Friel	<b>Clinical Audit</b> Karen Reynolds & Patricia Gibbons
<b>Quality Improvement</b> Maria Lordan Dunphy, Dervla Hogan, & Róisín Egerton	<b>National Safeguarding Office</b> Bridget McDaid	<b>Library Services</b> Nicola Fay & Helen Clark
<b>Incident Management</b> Loretta Jenkins & Margaret McGarry	<b>Antimicrobial Resistance and Infection Control</b> Barbara Stevin	<b>National Governance &amp; Risk</b> Carol Clarke & Corrine O'Hare

Special thanks to Juanita Guidera, Quality Facilitator, for ensuring that all went smoothly on the day.

You can listen back to QPS Talktime at the link below:  
[https://www.youtube.com/playlist?list=PLaiYlyOBpuPcWQeJ9DYsNJWXY9CZ\\_rR5](https://www.youtube.com/playlist?list=PLaiYlyOBpuPcWQeJ9DYsNJWXY9CZ_rR5)

For special training requests such as group training, just complete this form:  
<https://hse-ie.libwizard.com/f/requesttraining>

## Health Library Ireland Training – April to June 2023

### Searching Systematically for your Research Online

The aim of this workshop is to teach the skills for developing a research question, searching, selecting and managing the best available evidence to answer that research... [More](#)

Date: Tuesday, April 18, 2023

Time: 10:00am – 1:30pm Location: Online

### Ovid Embase Online

The aim of this workshop is to teach the skills for searching Embase on the Ovid platform. Develop familiarity with Embase on the Ovid platform... [More](#)

Date: Thursday, May 4, 2023

Time: 10:00am – 11:00am Location: Online

### Searching Medline/CINAHL on Ebsco Platform Online

This session will introduce the Medline and CINAHL databases in Ebsco. An overview of searching by keyword and subject term, search techniques and saving results... [More](#)

Date: Thursday, May 25, 2023

Time: 10:00am – 11:00am Location: Online

### Searching Medline/CINAHL on Ebsco Platform Online

This training session will introduce the Medline and CINAHL databases in Ebsco. An overview of searching by keyword and subject term, search techniques and saving results will be provided. ... [More](#)

Date: Thursday, June 15, 2023 Time: 10:00am – 11:00am Location: Online

### Searching Medline/CINAHL on Ebsco Platform Online

This training session will introduce the Medline and CINAHL databases in Ebsco. An overview of searching by keyword / subject term, search techniques and saving results will be... [More](#)

Date: Tuesday, April 25, 2023

Time: 10:00am – 11:00am Location: Online

### Managing and screening references using EndNote and Rayyan Online

The aim of this workshop is to demonstrate the functionalities of EndNote Online and Rayyan... [More](#)

Date: Tuesday, May 9, 2023

Time: 10:00am – 12:00pm Location: Online

### Predatory Publishing Online

The aim of this workshop is to make participants aware of predatory publishing, teach the skills to identify predatory publishing practices... [More](#)

Date: Monday, June 12, 2023

Time: 2:30am – 3:30pm Location: Online



# New Single Sign-On for Library Account, BorrowBox and OpenAthens

HSE Staff and Students can now use their **library catalogue account** to sign in to OpenAthens, the eLibrary and BorrowBox. There is no longer a need to register for both a library account and an OpenAthens Account.

**Gabriel Graves, Librarian  
Digital Knowledge Service**



This year as OpenAthens Accounts expire, HSE Staff and Students will be asked to renew their account on the library system so that they get the benefit of this new login method.

Currently there are two options for logging in:

1. Your Existing OpenAthens Account, which will remain active until it expires, or the last quarter of 2023. This login will include 'hse' in the username.
2. Your Library Account that you use to log in to the library catalogue. This login will normally include your firstname and lastname, and can be a new or existing account.

Users based in organisations outside of the HSE will still register using OpenAthens and have no change in service.

**Register for a Library Account at <https://books.hli.ie/cgi-bin/koha/opac-memberentry.pl>**

**Log into OpenAthens using your Library Account at <https://oaconnector.ebsco-gss.net/login.php?organization=ns333319&returnData=>**

**Log in to BorrowBox at <https://hse.borrowbox.com/login>**



Choose how to sign in

HSE Health Library Ireland Library Account Login [NEW]  
Sign in at Health Service Executive (Ireland)

 HSE OpenAthens Account  
For older HSE OpenAthens accounts & for employees of registered Section 38 and partner organisations.



# HLI in Numbers

January - March 2023

## Top issues

The 10 most checked-out 4 Week Loan in the past months

Title
<b>Diagnosing and treating common problems in paediatrics :</b> O'Neill, Michael B., - x, 653 pages : 25 cm +
<b>Oxford handbook of cardiac nursing /</b> Olson, Kate - Oxford University Press, Oxford : 2014 - xx, 396 pages : 18 cm.
<b>Essentials of perioperative nursing /</b> Goodman, Terri, - xii, 375 pages : 28 cm.
<b>CSA practice cases for the MRCP /</b> Naidoo, P., - xi, 322 pages : 25 cm
<b>The vulva :</b> Fischer, Gayle, - xi, 167 pages : 24 cm.
<b>The breastfeeding atlas</b> Wilson-Clay, Barbara Elaine, - pages cm
<b>Fix my face:</b> - iUniverse U.S 2020 - xvi, 105 pages : 29 cm
<b>Acute psychiatric emergencies :</b> - pages cm
<b>Clinical pharmacology for prescribing /</b> Emmett, Stevan R., - xvi, 732 pages : 25 cm
<b>The Maudsley guidelines on advanced prescribing in psychosis /</b> Morrison, Paul, - pages cm

The most popular print and electronic books Jan-Mar 2023

## Item title

File downloads ▼

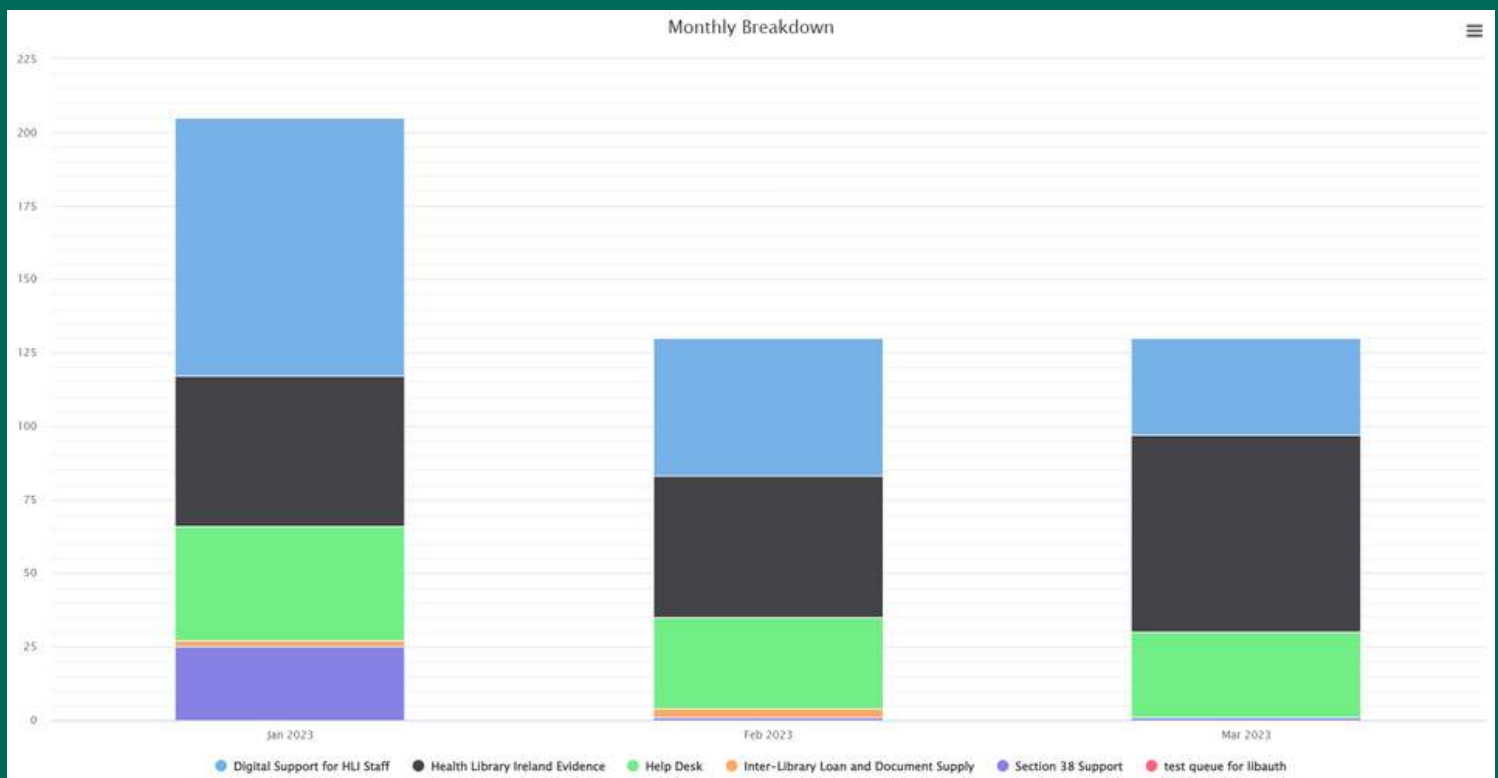
<b>10 guidelines for writing policy recommendations</b>	2,504
<b>The health benefits of nose breathing</b>	2,149
<b>Model of nursing: explanatory booklet</b>	1,826
<b>Community Infection Prevention and Control Manual: A practical guide to implementing Standard and Transmission-Based Precautions in Community Health and Social Care Settings</b>	1,560
<b>Electromagnetic fields from high voltage transmission lines: a report to Mr Michael Smith, T.D., Minister for Energy.</b>	1,312
<b>Fundamentals of occlusion and restorative dentistry. Part I: basic principles</b>	1,233
<b>Multidisciplinary team working: from theory to practice: discussion paper (1.84 MB)</b>	1,180
<b>An investigation into the provision, fitting and supply of external breast prostheses: A national study</b>	1,136
<b>A case study examining the inclusion of children with special educational needs in a mainstream primary school</b>	1,121



Most popular downloads in the Lenus repository Jan-Mar 2023.

Lenus contains more than 37,000 items relating to health research in Ireland.

The most common queries among HLI staff and clients in Jan-Mar 2023, filtered by query type:







### ADULT MENTAL HEALTH SERVICES (AMHS) CORK

Mon - Fri: 9.00 am - 1.00 pm 2.00 pm - 5.00 pm

### CAVAN GENERAL HOSPITAL

Open 24hrs with staff onsite Tuesday to Friday 8.45am - 4.00pm

### CONNOLLY HOSPITAL

Mon to Thurs: 10:00am -12:30pm and 1:30pm - 4.00pm.

24/7 swipe access to study rooms

### CORK UNIVERSITY HOSPITAL

Mon - Thurs: 9.00 am - 1.30 pm 2.30 pm - 5.00 pm

Fri: 9.00 am - 2.00 pm

### HLI HQ - DR STEEVENS' HOSPITAL

Monday to Friday 10.00 am - 12.00 pm; 2.00pm - 4.00 pm

### MAYO UNIVERSITY HOSPITAL

Monday to Friday 9.00am - 1.00pm & 2.00pm - 5.00pm

### MERLIN PARK

Mon - Wed: 9.00 am - 5.00 pm; Thurs: 9.00 am - 6.00 pm

Fri: 9.00 am - 2.00 pm

### MIDLANDS REGIONAL HOSPITAL, MULLINGAR

Monday - Friday 10am - 1.00pm and 2.00pm - 4.30pm

### MIDLAND REGIONAL HOSPITAL, PORTLAOISE

Mon - Fri: 10.00am - 1.00pm and 2.00pm - 4:30pm

Study Room available daily 7.00am - 9pm for out of hours study.

### MIDLAND REGIONAL HOSPITAL, TULLAMORE

9:30am - 1.00pm and 2.00 - 4:30pm Monday to Friday. 24/7 swipe access

to study rooms

### NAAS GENERAL HOSPITAL

24/7 for the PCs/staff area. We hope to have the library staffed Monday to

Friday 9.30am - 4.30pm

### OUR LADY OF LOURDES HOSPITAL, DROGHEDA

Monday to Thursday 9:30 am - 1.00 pm and 2.00 pm - 5.00 pm

Friday 9.30 am - 1.00 pm and 2.00 pm - 4.30 pm

Study Area 7.00 am - 11.00 pm

### OUR LADY HOSPITAL, NAVAN

Swipe access to library 7 am - 10 pm daily. Library staffed Monday to

Thursday 9 am-4 pm

### PORTIUNCULA

Monday - Thursday: 9.00 am - 12.00 pm and 2.00 pm - 5.00 pm

Friday: 9.00 am - 2.00pm. Study room available 24/7

### ROSCOMMON UNIVERSITY HOSPITAL

Open 24/7. Unstaffed Tues, Thurs & Fri

### SLIGO UNIVERSITY HOSPITAL

Monday - Tuesday 9.15am - 5.00pm, Wednesday 9.15am - 7.00pm,

Thursday 9.15am - 8.00pm, Friday 9.15 am - 3.00pm.

Computer area is open 24/7

### TIPPERARY UNIVERSITY HOSPITAL

Mon - Fri: 9.00 am - 1.00 pm 2.00 pm - 5.00 pm

### ST. COLUMCILLE'S HOSPITAL

Access to Library study area and PCs Monday to Friday 7am -7pm

Library staffed Monday and Wednesday 9.15 am - 5.30 pm, Thursday 9.30

am - 5.30 pm

### ST. CONAL'S HOSPITAL LETTERKENNY

Monday - Friday from 9:30am - 5.00pm.

### ST. LUKE'S GENERAL HOSPITAL, KILKENNY

Monday - Friday 9.00 am - 6500 pm

### ST. LUKE'S RADIATION ONCOLOGY NETWORK (SLRON)

Monday - Friday 7.00 am - 6.00 pm

### UNIVERSITY HOSPITAL GALWAY

Mon/Tues: 8.30 am - 5.00 pm; Wed: 8.30 am - 6.30 pm; Thurs: 9.00 am -

6.30pm & Friday 8.30am - 3.00 pm

### UNIVERSITY HOSPITAL KERRY

Mon - Fri: 8.30 am - 4.30 pm

### UNIVERSITY HOSPITAL LIMERICK

Open unstaffed - 24 hr swipe card access

Staffed Monday to Friday 9.00am - 5.00pm

### UNIVERSITY HOSPITAL WATERFORD

Monday - Thursday 9.00 am - 5.00 pm; Friday 9.00 am - 3.30 pm.

Out-of-hours access via swipe-card to Library Training Room.

### WEXFORD HOSPITAL LIBRARY

Open 24/7. Staffed Mon - Fri: 9.00 am - 1.00 pm 2.00 pm - 5.00 pm.

Our Virtual Assistant LAMA (Library Ask Me Anything) is available on the website 24/7 to answer simple questions about library services and access.

And our Virtual Desk is live from Monday - Friday 11.00am - 1.00pm & 3.00pm - 4.00pm . Visit [hselibrary.ie](https://hselibrary.ie) for more information.