



CONNOLLY HOSPITAL LIBRARY



Academic Centre, Connolly Hospital Blanchardstown, Dublin 15, X40D

National Health Library and Knowledge Service

Opening Hours

Monday to Thursday
10:30 - 15:30
Friday Closed
Closed Lunchtime 12:30 - 13:30

24/7 Electronic Reading Room

Library Contacts

Regional Librarian: Bennery Rickard

✉ bennery.rickard@hse.ie

Graduate Trainee: Alice Murphy


✉ alice.murphy6@hse.ie

☎ (01) 646 5620/5621

Fax: 822 6318



HSE LIBRARY

- Connolly Hospital Library is available to all HSE Staff & students on clinical placement.
- PCs Study spaces available (HSE & RCSI networks)
- Library registration [here](#)
- OpenAthens Registration: 
- [How to activate OpenAthens account](#)



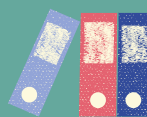
Need a quick question answered?
Ask LAMA
on hselibrary.ie or to submit a question go to [hselibrary.ie/virtual desk](https://hselibrary.ie/virtualdesk)



POINT OF CARE TOOLS

- Point of care tools are reference resources that clinicians can use immediately at the point-of-care with patients.
- UpToDate, Clinical Key, BMJ Best Practice, Medicines Complete, Cochrane.
- A [video guide](#) on how to use these resources.

DATABASES



- The Library subscribes to a number of databases including MEDLINE, CINAHL, PsychINFO, EMBASE, PubMed, Web of Science, Cochrane.
- These databases allow users to access information not freely available on the internet and relevant to health research.
- An [OpenAthens account is required](#) to access the databases.

JOURNALS

Our library service provides access to a variety of Medical, Surgical, Psychiatry and other Specialty journals within Medicine.

- The BMJ, the Lancet, JAMA, NEJM & Annals of Internal Medicine to name a few.
- Gain full access to these via [Journal Finder](#) using your OpenAthens Login



QUERY & LITERATURE SEARCHING

- The Medical Library offers expertise in the retrieval of information from databases.
- To maximise your literature search results you can submit your '[General Research Request](#)' in an online form.
- The library also offers a '[Summary of Evidence Request](#)' if your query is in relation to COVID-19.

BORROWING & E-BOOKS

- All readers must register with the library in order to borrow books.
- Borrow up to 5 books for 4 weeks, renewal 3 times and place holds on books online.
- Search our library catalogue here: <https://books.hselibrary.ie/>



TRAINING

- Training in the use of library resources is provided by the **Information Skills Team**.
- Regular Online training sessions are carried out throughout the year.
- Browse the calendar and book a session online [here](#)

Prepared by the National Health Library & Knowledge Service



@hselibrary @LenusHSE



@hselibrary



NATIONAL HEALTH LIBRARY
& KNOWLEDGE SERVICE

Visit
www.hselibrary.ie
for more

